



DEEP  
POVERTY  
NETWORK

An Initiative of Open Space Association.

açıkalan

# **Deep Poverty Network Information Note: Still on this April 23rd...**





DEEP  
POVERTY  
NETWORK

An Initiative of Open Space Association.

açıkalan

**On this April 23rd, six out of every  
hundred children still cannot  
start education!**



According to the Ministry of Education Formal Education Statistics for 2022/23, the net enrollment rate in primary schools by education level and gender is 93.8% for boys and 93.9% for girls in the 2022/23 academic year.





DEEP  
POVERTY  
NETWORK

An Initiative of Open Space Association.

açıkalan

# One of the five children who started secondary education on this April 23rd still cannot finish school!



According to the National Education Statistics Database of TURKSTAT, the completion rate of students starting secondary education by education level and gender in the 2022/23 academic year is 78.8% for boys and 81.8% for girls.



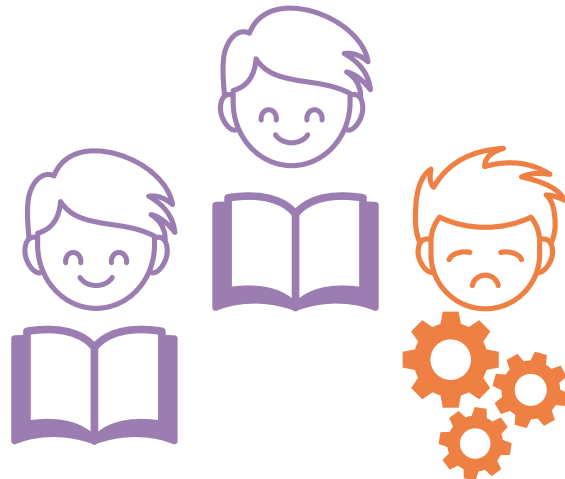


DEEP  
POVERTY  
NETWORK

An Initiative of Open Space Association.

açıkalan

**On this April 23rd, one out of every three boys aged 15-17 and one out of every ten girls still have to work at the same time!**



According to TURKSTAT, the Household Labor Force Survey, the labor force participation rate of boys aged 15-17 in 2023 is 32.2%. In girls of the same age, this rate is 11.5%.





DEEP  
POVERTY  
NETWORK

An Initiative of Open Space Association.

açıkalan

**On this April 23rd, six out of every ten children whose parents have received education below high school level are able to receive education below high school level**



According to TURKSTAT Intergenerational Transmission of Disadvantages, 56.3% of those whose mothers received education below high school when they were around 14 years old, and 60% of those whose fathers received education below high school, also only received education below high school.





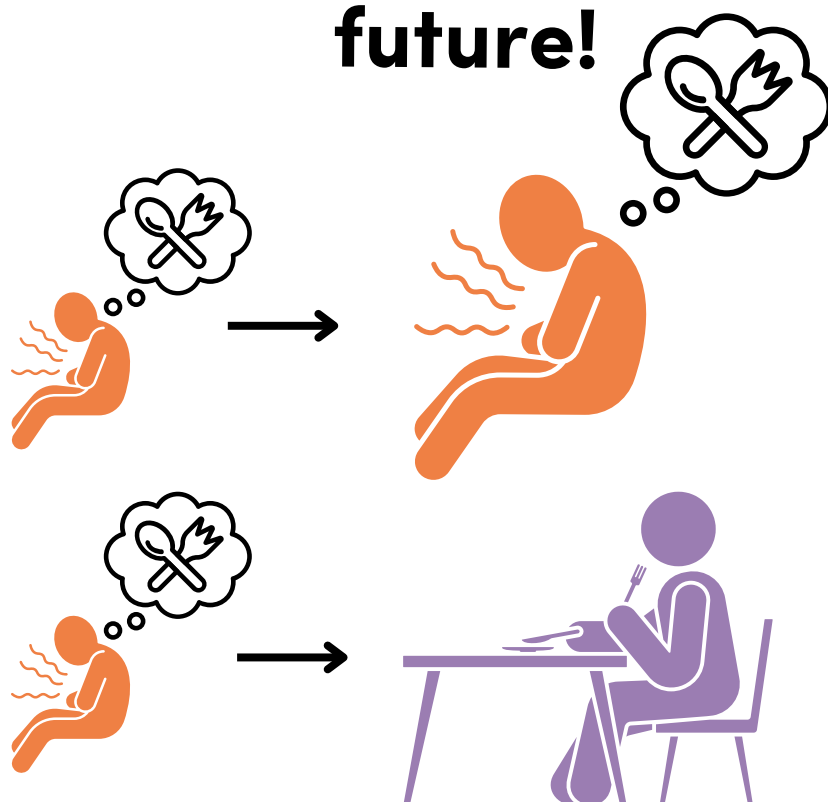
DEEP  
POVERTY  
NETWORK

An Initiative of Open Space Association.

açıkalan

**Half of the children who cannot eat meat, chicken or fish every day on this April 23rd will not be able to eat them every two days in the**

**future!**



According to the Income and Living Conditions Survey conducted by TURKSTAT, in 2023, 49.1% of those who could not afford to consume meat, chicken, and fish every day when they were around 14 years old, were unable to consume the same foods every other day in 2023.

